

**SHERBURNE COUNTY  
2019 POPULATION  
STATISTICS**  
*(Estimated)*

TOWNSHIPS ONLY: 41,403  
CITIES ONLY: 55,598

**TOTAL COUNTY POPULATION: 97,001**  
*(Estimated)*

**LEGEND:**

POP ..... ESTIMATED POPULATION  
HB ..... SINGLE FAMILY HOUSES  
MULTI ..... MULTI-FAMILY UNITS

POPULATION DETERMINED  
AT RATE OF:  
2.50 PEOPLE PER RESIDENCE  
2.50 PEOPLE PER UNIT

TOTAL SINGLE FAMILY HOUSES BUILT IN TOWNSHIPS - 175 HOMES  
TOTAL SINGLE FAMILY HOUSES BUILT IN CITIES - 257 HOMES  
MULTI-FAMILY UNITS: - 50 UNITS

2019  
SHERBURNE COUNTY  
BUILDING AND  
ESTIMATED POPULATION  
REPORT  
1/15/2019

**SHERBURNE COUNTY**  
**ESTIMATED 2019 POPULATION**

**97,001**

*Townships only* - 41,403

*Cities only* - 55,598

*(Figures determined at a rate of 2.5 people per residence or multi-family unit)*

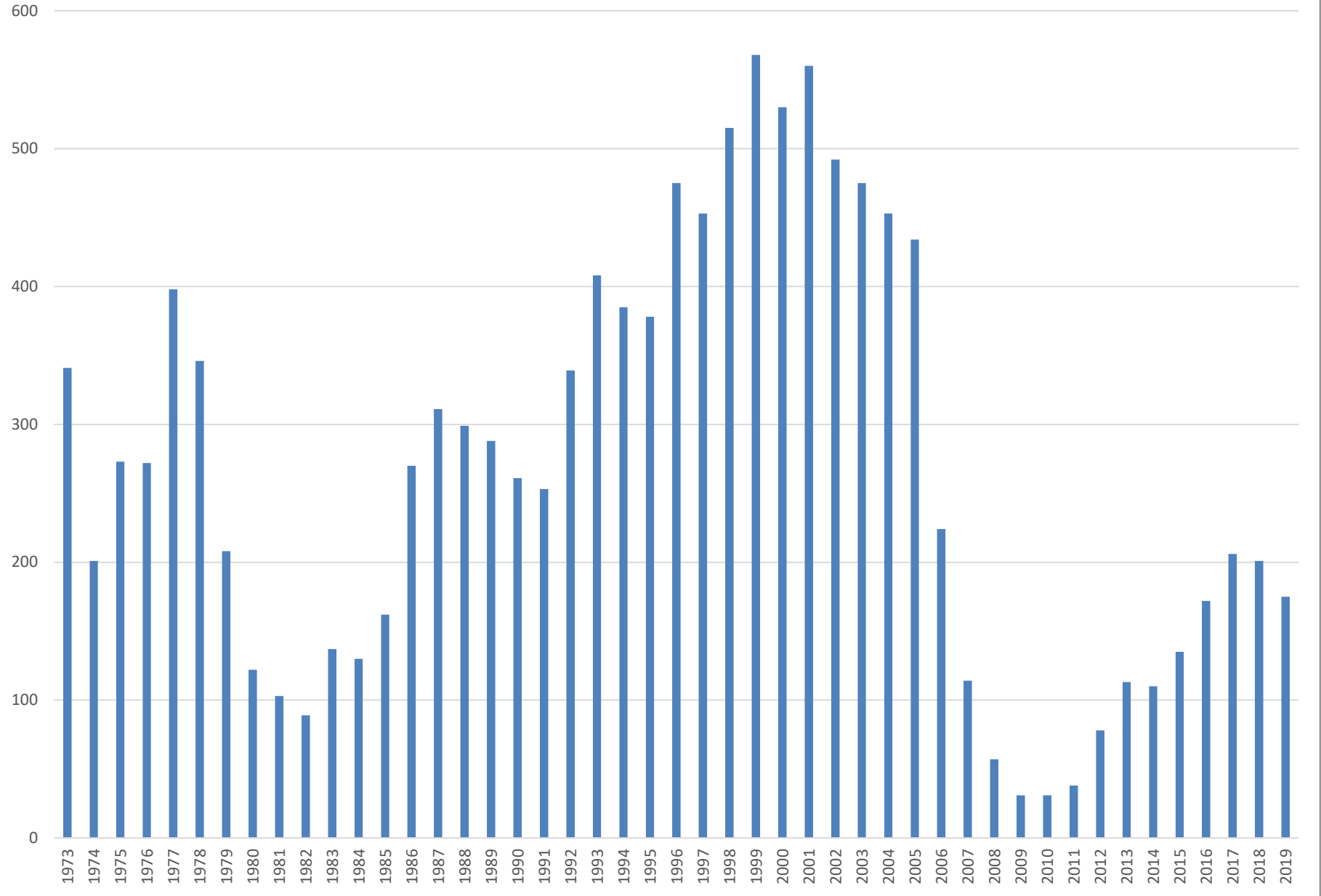
**PERMITS ISSUED IN THE TOWNSHIPS OF SHERBURNE COUNTY**

<b>TOWNSHIP</b>	<b>NEW HOME PERMITS &amp; VALUATIONS</b>		<b>ALL OTHER BUILDING PERMITS &amp; VALUE</b> <small>(Does not include Solar Farms)</small>		<b>SEPTIC UPGRADES</b>	<b>NEW SEPTICS</b> <small>(Does not include hook-ups to cluster systems)</small>
<b>BALDWIN</b>	43	9,428,000	209	1,668,000	32	27
<b>BECKER</b>	18	5,480,059	305	5,490,283	18	17
<b>BIG LAKE</b>	23	5,420,000	379	2,183,000	40	23
<b>BLUE HILL</b>	21	3,427,000	68	601,000	6	21
<b>CLEAR LAKE</b>	8	2,077,000	78	764,000	16	8
<b>HAVEN</b>	3	449,000	161	1,242,000	12	2
<b>LIVONIA</b>	29	6,609,000	263	1,542,000	15	23
<b>ORROCK</b>	17	3,791,000	159	1,110,000	17	15
<b>PALMER</b>	6	1,198,000	185	644,000	21	9
<b>SANTIAGO</b>	7	1,655,000	48	551,000	12	7
<b>TOTALS</b>	<b>175</b>	<b>39,534,059</b>	<b>1,855</b>	<b>15,795,283</b>	<b>189</b>	<b>152</b>

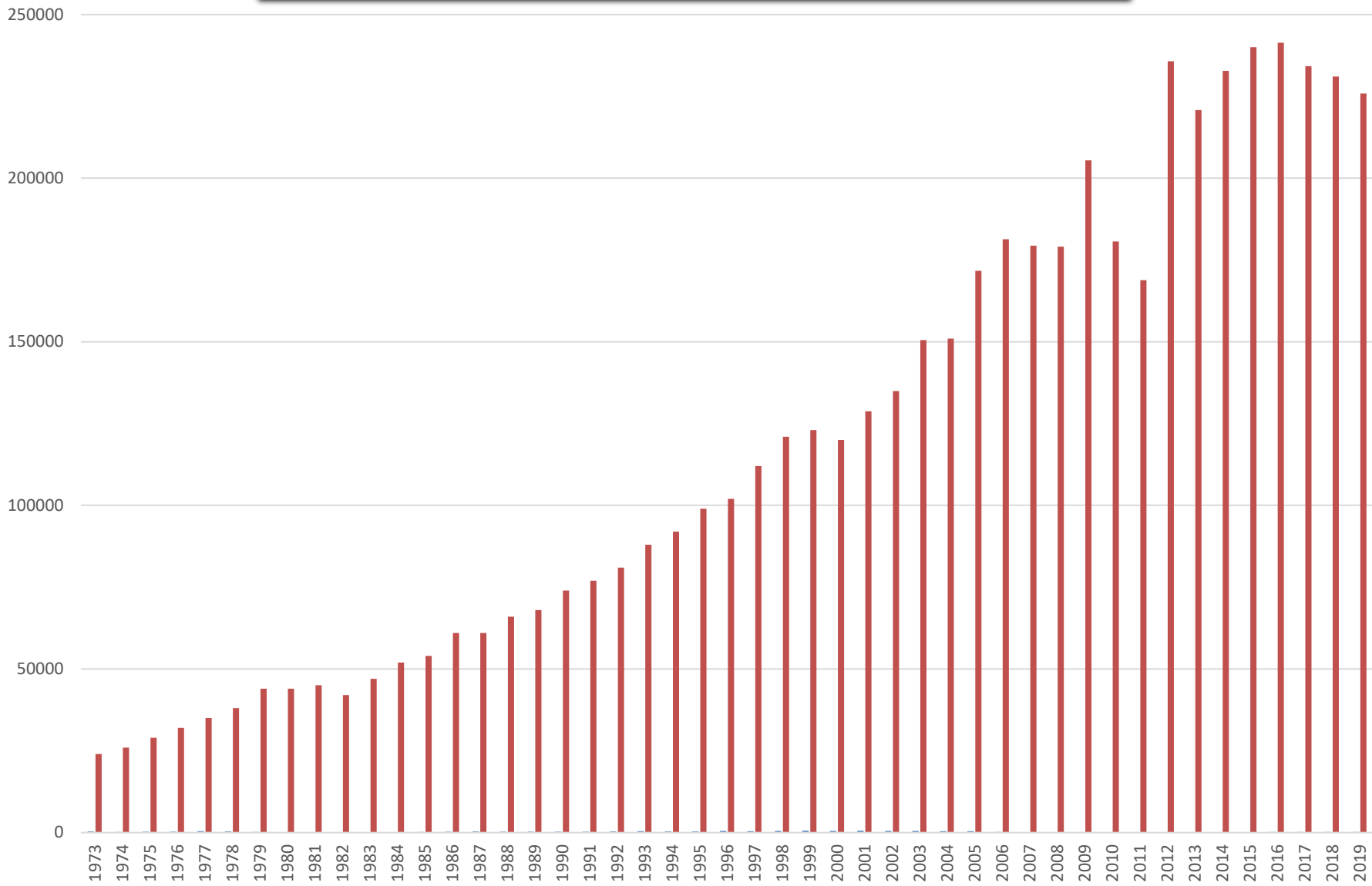
**NEW HOME / MULTI-FAMILY UNIT PERMITS  
ISSUED IN THE CITIES OF SHERBURNE COUNTY**

<b>CITIES</b>	<b>NEW SINGLE-FAMILY HOMES</b>	<b>MULTI-FAMILY UNITS</b>
<b>EAST ST. CLOUD</b>	5	0 UNITS
<b>PRINCETON</b>	0	0 UNITS
<b>ZIMMERMAN</b>	42	0 UNITS
<b>BECKER</b>	14	4 UNITS
<b>CLEAR LAKE</b>	3	0 UNITS
<b>BIG LAKE</b>	76	38 UNITS
<b>ELK RIVER</b>	117	8 UNITS
<b>TOTALS</b>	<b>257 New Homes</b>	<b>50 Units</b>

# Number of New Home Permits



# Average Valuations of New Home Permits in Sherburne County Townships



SHERBURNE COUNTY  
**RECORDED PLATS**  
*TOWNSHIPS ONLY*

1969	10 PLATS	-	193 Residential lots	1997	54 PLATS	-	517 Residential lots
1970	10 PLATS	-	224 Residential lots	1998	38 PLATS	-	612 Residential lots
1971	11 PLATS	-	162 Residential lots 7 (COMMERCIAL LOTS)	1999	52 PLATS	-	523 Residential lots 2 (COMMERCIAL LOTS)
1972	24 PLATS	-	563 Residential lots 36 (COMMERCIAL LOTS)	2000	43 PLATS	-	383 Residential lots 17 (COMMERCIAL LOTS)
1973	21 PLATS	-	575 Residential lots 49 (COMMERCIAL LOTS)	2001	46 PLATS	-	446 Residential lots 4 (COMMERCIAL LOTS)
1974	18 PLATS	-	292 Residential lots	2002	54 PLATS	-	461 Residential lots 3 (INDUSTRIAL LOTS) 1 (COMMERCIAL LOTS)
1975	3 PLATS	-	10 Residential lots 3 (COMMERCIAL LOTS)	2003	47 PLATS	-	531 Residential lots 10 (COMMERCIAL LOTS)
1976	6 PLATS	-	143 Residential lots	2004	57 PLATS	-	579 Residential lots 6 (INDUSTRIAL LOTS)
1977	8 PLATS	-	149 Residential lots	2005	46 PLATS	-	406 Residential lots
1978	7 PLATS	-	174 Residential lots	2006	30 PLATS	-	404 Residential lots
1979	12 PLATS	-	227 Residential lots	2007	20 PLATS	-	187 Residential lots 21 (COMMERCIAL LOTS)
1980	4 PLATS	-	106 Residential lots	2008	11 PLATS	-	23 Residential lots
1981	1 PLAT	-	4 Residential lots	2009	5 PLATS	-	5 Residential lots
1982	2 PLATS	-	21 Residential lots	2010	4 PLATS	-	8 Residential lots
1983	1 PLAT	-	49 Residential lots	2011	7 PLATS	-	10 Residential lots 1 (INDUSTRIAL LOT)
1984	3 PLATS	-	18 Residential lots	2012	5 PLATS	-	5 Residential lots
1985	6 PLATS	-	44 Residential lots	2013	3 PLATS	-	3 Residential lots
1986	5 PLATS	-	72 Residential lots	2014	10 PLATS	-	18 Residential lots 3 (COMMERCIAL LOTS)
1987	8 PLATS	-	133 Residential lots	2015	9 PLATS	-	25 Residential lots
1988	8 PLATS	-	131 Residential lots	2016	4 PLATS	-	16 Residential lots 2 (INDUSTRIAL LOTS)
1989	7 PLATS	-	75 Residential lots	2017	9 PLATS	-	28 Residential lots
1990	9 PLATS	-	69 Residential lots 3 (COMMERCIAL LOTS)	2018	13 PLATS	-	53 Residential lots
1991	5 PLATS	-	73 Residential lots	2019	18 PLATS	-	151 Residential lots
1992	10 PLATS	-	168 Residential lots				
1993	21 PLATS	-	303 Residential lots				
1994	14 PLATS	-	260 Residential lots				
1995	34 PLATS	-	268 Residential lots				
1996	68 PLATS	-	487 Residential lots 30 (COMMERCIAL LOTS)				

**SHERBURNE  
2019 PLATTED/UNPLATTED ACRES  
TOWNSHIPS ONLY**

<b>TOWNSHIP</b>	<b># PLATS RECORDED IN 2019</b>	<b># PLATTED LOTS</b>	<b>ACRES PLATTED</b>	<b>ACRES ANNEXED</b>	<b>TOTAL PLATTED ACRES</b>	<b>TOTAL UNPLATTED ACRES</b>	<b>% OF ACRES PLATTED</b>
BALDWIN	3	20	82	0	6,489	15,739	29%
BECKER	2	6	29	645 (M&B)	4,850	29,017	14%
BIG LAKE	5	37	246	4 (M&B), 3 platted	6,156	19,690	24%
BLUE HILL	1	24	66	0	2,323	20,991	10%
CLEAR LAKE	2	4	142	7 (M&B), 6 platted	1,398	22,173	6%
HAVEN	1	1	1	0	1,298	20,523	6%
LIVONIA	2	17	75	0	5,695	14,806	28%
ORROCK	0	0	0	0	3,670	19,544	16%
PALMER	1	41	101	0	1,379	21,959	6%
SANTIAGO	1	1	79	0	1,250	22,104	5%
<b>TOTALS</b>	<b>18</b>	<b>151</b>	<b>821</b>	<b>665</b>	<b>34,508</b>	<b>206,546</b>	<b>14%</b>
	<b>Plats Recorded in 2019</b>	<b>Lots Platted in 2019</b>	<b>Acres Platted in 2019</b>	<b>Acres Annexed in 2019</b>	<b>Total Platted acres in Sherburne</b>	<b>Total Unplatted acres in Sherburne</b>	<b>% of Acres Platted</b>